

Dunbrik supplies chimney pots and terminals suitable for domestic fuels in a range of styles and heights. Pots are made of clay and coloured terracotta red or buff. Most red pots are available from stock. Some tall sizes and buff colour products are made to order. Dimensions of clay fired products can vary by up to 10% and colours may vary in the firing process. If you require matched pots, please order them together. Chimney pot dimensions are external measurements. Flue system sizes are the internal square or internal diameter sizes in mm.

Chimney pots for all domestic fuels



Cannon head pot

	Weight	Height
Cann300	9.2 kg	300mm
Cann450	14 kg	450mm
Cann600	18 kg	600mm
Cann750	20 kg	750mm
Cann900	25 kg	900mm

Base 300mm dia. Top 280mm dia.
For 200 & 225 mm flue systems



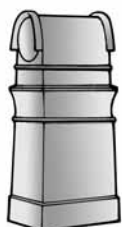
Round straight pot 300RST750

Weight 51 kg Height 750mm
Base 360mm dia. Top 400mm dia.
For 300 mm sq. & round flue systems



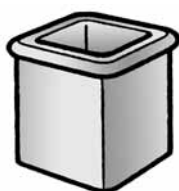
Rook pot Rook500

Weight 15 kg Height 500mm
Base 300mm dia. Top 250mm dia.
For 200 & 225 mm flue systems



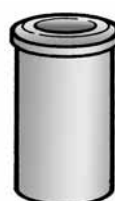
Hooded square pot HSP750

Weight 41 kg Height 750mm
Base 300mm sq. Top 300mm long
For 250 mm flue systems



Square beaded pot 250POT375

Weight 30 kg Height 375mm
Base 310mm sq. Top 370mm sq.
For 250 mm internal sq. flue system



Straight roll top pot

	Weight	Height
Roll300	9.4 kg	300mm
Roll450	14 kg	450mm
Roll600	18 kg	600mm

Base 250mm dia. Top 280mm dia.
For 200 & 225 mm flue systems



Round straight pot 450RST900

Weight 105 kg Height 900mm
Base 520mm dia. Top 560mm dia.
For 450 mm flue system



Square base round pot SBRP740

Weight 29 kg Height 740mm
Base 330mm sq. Top 280mm dia.
For 200 225 250 & 300 mm flues



Bishop pot Bish750

Weight 35 kg Height 750mm
Base 330mm sq. Top 310mm dia.
For 200, 225, 250 & 300 mm flues



Decorative fuel effect pot DFE580

Weight 20 kg Height 580mm
Base 300mm dia. Top 250mm
For 200, 225 & 250mm flue systems

Add to the product code - **R** for Red or **B** for Buff

Topguard Steel Cowls

Bird and rain guards for chimneys



Topguard 260

TG260

Weight 1.6 kg
Height 260mm
Base 220mm dia.

Suitable for Dunbrik cannon pots and roll top pots.

Topguard 350

TG350

Weight 2 kg
Height 245mm
Base 360mm dia.

Suitable for Dunbrik 300RST750 pots

Topguard 500

TG500

Weight 3.7 kg
Height 395mm

Base 505mm dia.

Suitable for Dunbrik 450RST900 pots

Add to the product code - **R** for Red or **B** for Buff

Gas Terminals for fires up to 7kW

for use with pre-cast flues and class 2 gas fires

Chimney pot insert



Stellgas

Stell380

Weight 11 kg Height 380mm
Base 150mm dia. Top 250mm dia.

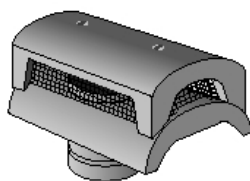
Add to the product code
R for Red or **B** for Buff.

Insert for cannon & roll top pots

Keeps out direct rain and deters rodent and bird access to the chimney.

The Stellgas insert must be removed if a solid fuel fire or a gas fire over 7kW is fitted.

Ridge Vent Terminals



Dunvent

DVA angled 30 deg pitch
DVH half-round
DVS segmental

Weight 16.6 kg
Tile is 450mm long
Flue pipe is 152mm long

Fits to SFL 125mm IL pipe



Gastyle

GTA angled 30 deg pitch
GTH half-round
GTS segmental

Weight 8.3 kg
Tile is 450mm long
Flue pipe is 305mm long
GVT is 200mm above ridge

Fits to SFL 125mm IL pipe

Colours

AB Antique brown

OE Old English red

OG Olive green

SG Slate grey

TR Terracotta red

BK Black

Chimney Vents

These provide air ventilation in chimneys not being used as working flues.



Flue Vent

Vent200

Weight 8.5 kg Height 200mm
Base 185mm dia. Top 330mm dia

These vent inserts are suitable for cannon pots and roll top pots

Add to the product code - **R** for Red or **B** for Buff

dunbrik flues
domestic flue & chimney systems

Dunbrik (Yorks) Ltd

172 Ferry Lane, Stanley, Wakefield, WF3 4LT

Tel: 01924 373694 Fax: 01924 332878

Email: tech@dunbrik.co.uk

Web: www.dunbrik.co.uk