

# **dunbrik flues**

domestic flue & chimney systems



## **FireFlexmaster**

**A Multi Fuel Flexible Chimney Liner  
10 year Manufacturer Guarantee**

172 Ferry Lane, Stanley  
Wakefield, West Yorkshire, WF3 4LT

Tel: 01924 373694 Fax: 01924 383459  
Email: [flues@dunbrik.co.uk](mailto:flues@dunbrik.co.uk) Web: [www.dunbrik.co.uk](http://www.dunbrik.co.uk)

# **FireFlexmaster**

## **Flexible Chimney Liner**

### **For Gas, Oil, Wood and Solid Fuel**

#### **Introduction**

A twin skin flexible chimney liner, manufactured by H Docherty Ltd, used for lining masonry chimneys serving **Gas, Oil, Wood and 'Clean burn' Solid fuel** appliances.

The **FireFlexmaster** chimney liner is available in 316 grade of stainless steel to BS1449 in diameters of 6" & 7".

- Twin skinned chimney liner
- Smooth inner bore reduces soot build up
- Deeply corrugated outer provides protective casing
- 10 year guarantee
- Triple lock joint system

#### **Approval**

**FireFlexmaster** chimney liner has been certified as follows:-

BSRIA Cert No:- 14406/1 tested to BS EN1856-2: 2004  
HETAS Approved



Supplied by

**dunbrik flues**  
domestic flue & chimney systems

172 Ferry Lane  
Stanley  
Wakefield  
West Yorkshire  
WF3 4LT

Tel: 01924 373694  
Fax: 01924 383459

Email: [flues@dunbrik.co.uk](mailto:flues@dunbrik.co.uk)  
Web: [www.dunbrik.co.uk](http://www.dunbrik.co.uk)

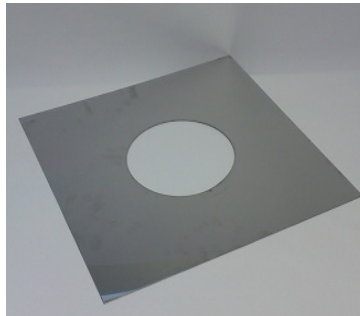
# FireFlexmaster Multi Fuel Chimney Components

## For Gas, Oil, Wood and Solid Fuel



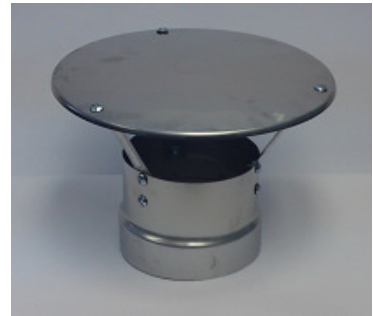
### Chimney liner (SF100)

A high Quality twin skin flexible chimney liner made from 316 grade stainless steel, used for lining masonry chimney stacks.



### Closure plate (SP140)

A stainless steel closure plate. This plate sits at the top of the stack and, used in conjunction with a Top Clamp, provides the support required.



### Rain cowl (SFC306)

Provides rain protection at the top of the stack. Used with the closure plate, top clamp and top sleeve fixing method; where there is no chimney pot.



### Nose cone (NC)

The Nose cone fixes to the bottom of the chimney liner and helps prevent snagging against the side of the flue during installation.



### Top clamp (TC130)

The top clamp is used at the top of the stack in conjunction with a closure plate, providing the support required.



### Suspended cowl (SCS501)

Allows for the chimney liner to be installed without removing the chimney pot, and incorporates a cowl.



### Adaptor (FA160)

Used to connect the flexible chimney liner to rigid stove pipe at the base of the stack. The chimney liner sits between the two skins shown on the top of the adaptor.



### Cannon chimney pot (CANN300)

For use when the existing chimney pot is damaged – used with the Suspended Cowl



### Fire cement (Dunseal)

Universal Fire cement in 310ml cartridge

# User Instructions

**FireFlexmaster** Multi Fuel Chimney Liner is constructed using high grade, quality assured stainless steel. With care and correct use it will provide many years of safe, and reliable service.

It is important that you read and follow these instructions fully.

- **DO**

burn the correct fuel for the appliance, such as standard fuel oil, gas, 'clean burn' coal, cured dry logs and cured dry peat.

- **DO**

burn "seasoned", dry wood - that is split logs which have been stacked for 12-24 months under cover outside allowing a free circulation of fresh air.

- **DO**

sweep the chimney before installation and then at least twice a year, more often may be necessary depending upon the fuel and use. Instruct the chimney sweep that only a bristle brush of the correct diameter should be used on rods - not a ball and brush.

- **DO**

avoid chimney fires. The extreme temperatures involved can damage the liner.

- **DO NOT**

burn any of the following: Wet or "Green" wood, painted or treated timber, household refuse, petrochemical by-product coal substitute. These can create soot deposits and gases, which are toxic and will corrode the chimney liner.

- **DO NOT**

allow fires to "slumber". This produces corrosive condensation in the flue and increases the chance of chimney fires.

- **DO NOT**

use this product on biomass boilers and stoves

## Manufacturer Guarantee Scheme

**FireFlexmaster** Multi Fuel Chimney Liner 316 grade, manufactured by H Docherty Ltd system is guaranteed for ten years (replacement of product only) subject to the following conditions:

The appliance must be operating normally, set correctly and using only good quality fuels from the specified list above.

The registration card must be completed and returned at time of purchase. The guarantee is not valid if refuse or any type of plastic is burnt, or if the appliance is located where any substance containing Chlorine or Fluorine can be drawn into the air intakes.

**dunbrik flues**  
domestic flue & chimney systems

Tel: 01924 373694  
Fax: 01924 383459  
Email: [flues@dunbrik.co.uk](mailto:flues@dunbrik.co.uk)  
Web: [www.dunbrik.co.uk](http://www.dunbrik.co.uk)

**For Gas, Oil, Wood and Solid Fuel**

# FireFlexmaster Installation

## For Gas, Oil, Wood and Solid Fuel

### PREPARATION

Good working practices and statutory health and safety considerations should be followed. The installation of **FireFlexmaster** chimney lining is a two person job.

Safe working platforms or other means of access should be arranged to avoid accidents. Wear protective gloves, goggles and dust-masks, particularly when handling dusty or sooty materials. There is a danger of cuts and abrasions from the liner and metal fittings.

**FireFlexmaster** can be used with UK fuels such as standard fuel oil, gas, 'clean burn' coal, as well as wood and wood products, providing it is suitably cured. The product is not suitable for biomass boilers or stoves.

### SIZE OF LINING

The following is a general guide for flue sizing but referral should be made to Building Regulations ADJ Clause 2.4 and Table 2.

#### **Solid-fuel stoves, room heaters, boilers and cookers:**

Minimum 6" (150mm) diameter, 7" – 8" (175mm – 200mm) for larger or multi-fuel appliances.

#### **Other appliances:**

Consult the appliance manufacturer. Unless the appliance manufacturer recommends otherwise, the diameter of the liner should not be smaller than the appliance outlet.

### PREPARING THE CHIMNEY

Check that the appliance and chimney arrangements are satisfactory and that the walls of the chimney are at least 100mm thick solid masonry; ensure that the chimney is structurally sound.

Clean the chimney using a brush and rods, your chimney sweep should be able to determine the length of the chimney, you will need to know this to order the correct length of **FireFlexmaster** flue liner.

**FireFlexmaster** chimney liner is supplied in one continuous length. It is better to over order as the **FireFlexmaster** chimney liner cannot be joined together. Remove any terminals, chimney pots, cappings, damper plates or any other obstructions, which might effect installation of the liner. If there are severe bends or obstructions in the length of the flue, the chimney wall will require opening to ensure proper access and installation. The openings must be repaired using the appropriate materials and workmanship after installation.

There are two methods of installation at the top of the stack that we suggest;

- 1) **Without chimney pot** or
- 2) **With chimney pot.**

**dunbrik flues**  
domestic flue & chimney systems

Tel: 01924 373694  
Fax: 01924 383459  
Email: [flues@dunbrik.co.uk](mailto:flues@dunbrik.co.uk)  
Web: [www.dunbrik.co.uk](http://www.dunbrik.co.uk)

**For Gas, Oil, Wood and Solid Fuel**

## Method 1 Without Chimney Pot

1) Clear all existing mortar flaunching from the top of the chimney stack.

2) It is very important that the arrows on the **FireFlexmaster** chimney liner point upwards when installed.



3) Attach the draw-cord to the nose cone. Use self-tapping screws OR strong tape to secure the nose cone to the end of the liner that will be connected to the appliance or fireplace recess.



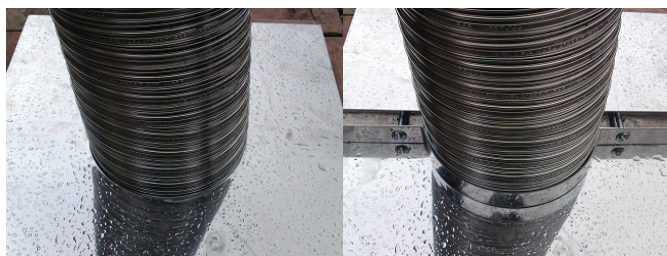
4) Lower the drawcord down the chimney to the person at the fireplace recess. It may be necessary to attach a small weight to the end of the drawcord. Lower the length of **FireFlexmaster** chimney liner into the chimney from the top, if necessary gently pulling from below using the drawcord. Please ensure that the liner does not over bend and does not scrape over any sharp objects.



5) When the chimney liner is all the way through the flue, remove the nose cone and connect the base of the chimney liner to the appropriate adaptor using stainless steel self tapping screws and seal with Dunseal. The **FireFlexmaster** chimney liner should then be pushed back up the chimney to the desired position.



6) Place the Top Plate over the end of the **FireFlexmaster** chimney liner sliding it down the liner to the top of the chimney stack. Secure the liner in place using the Top Clamp.



7) Cut the liner 140mm from the top of the Top plate



8) Fit the Rain cap over the projecting **FireFlexmaster** chimney liner and secure in place with stainless steel screws. Flaunch the Top Plate, Top Clamp and surrounding area with a suitable mortar (capable of resisting rain and frost).



**dunbrik flues**  
domestic flue & chimney systems

Tel: 01924 373694  
Fax: 01924 383459  
Email: [flues@dunbrik.co.uk](mailto:flues@dunbrik.co.uk)  
Web: [www.dunbrik.co.uk](http://www.dunbrik.co.uk)

**For Gas, Oil, Wood and Solid Fuel**

## Method 2 With Chimney Pot

1) Check the chimney pot is not damaged or broken and is no larger than 12" (300mm) overall diameter. If it is you will need to replace the pot.

2) It is very important that the arrows on the **FireFlexmaster** flue liner point upwards when installed.



3) Attach the draw-cord to the nose cone. Use self-tapping screws OR strong tape to secure the nose cone to the end of the liner that will be connected to the appliance or fireplace recess.



4) Lower the drawcord down the chimney to the person at the fireplace recess. It may be necessary to attach a small weight to the end of the drawcord. Lower the length of **FireFlexmaster** chimney liner into the chimney from the top, if necessary gently pulling from below using the drawcord. Please ensure that the liner does not over bend and does not scrape over any sharp objects.



5) When the chimney liner is all the way through the flue, remove the nose cone and connect the base of the chimney liner to the appropriate adaptor using stainless steel self tapping screws and seal with Dunseal. The **FireFlexmaster** chimney liner should then be pushed back up the chimney to the desired position.



6) Mark the liner level with the top of the chimney pot. Gently pull the liner back up the chimney and cut the liner approximately 100mm below the mark.

7) Attach the Suspended Cowl to the top of the liner – the bottom spigot is inserted into the top of the liner. The fixing band is then tightened around the liner to form a secure hold. The **FireFlexmaster** chimney liner is then gently pushed back down the chimney stack.



8) The Suspended Cowl is then placed over the chimney pot and the fixing band on the outside of the Suspended cowl tightened up.



**dunbrik flues**  
domestic flue & chimney systems

Tel: 01924 373694  
Fax: 01924 383459  
Email: [flues@dunbrik.co.uk](mailto:flues@dunbrik.co.uk)  
Web: [www.dunbrik.co.uk](http://www.dunbrik.co.uk)

**For Gas, Oil, Wood and Solid Fuel**



Photo courtesy of MacMetalcraft



Photo courtesy of Bellystoves



Photo courtesy of Bellystoves

**dunbrik flues**  
domestic flue & chimney systems

Tel: 01924 373694  
Fax: 01924 383459  
Email: [flues@dunbrik.co.uk](mailto:flues@dunbrik.co.uk)  
Web: [www.dunbrik.co.uk](http://www.dunbrik.co.uk)