

Stove Connection Block ref 200SCB – Technical details

Dunbrik A1 Concrete Flue Liner systems are installed in block/brickwork to form domestic chimneys suitable for all types of domestic fires. The 200mm internal round system is suitable for open fires in fireplace openings up to 500mm by 550mm and for stoves with outlets up to 200mm external diameter.

The stove connection block provides a means of connecting a domestic stove to the concrete flue. The stove connection block is supported across the fireplace on two constructional lintels or by one lintel and walling.

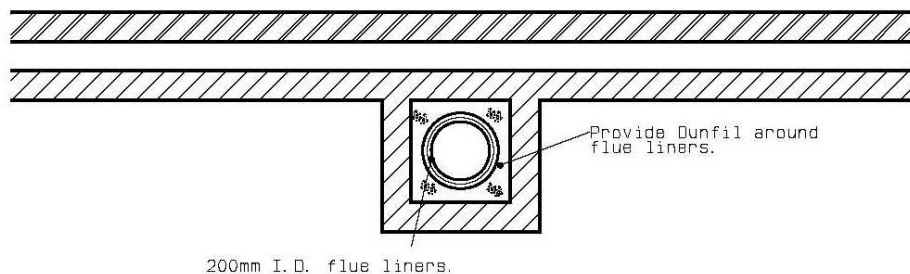
Typical Installation Diagrams

Stove Connection Block ref 200SCB and 200mm liners

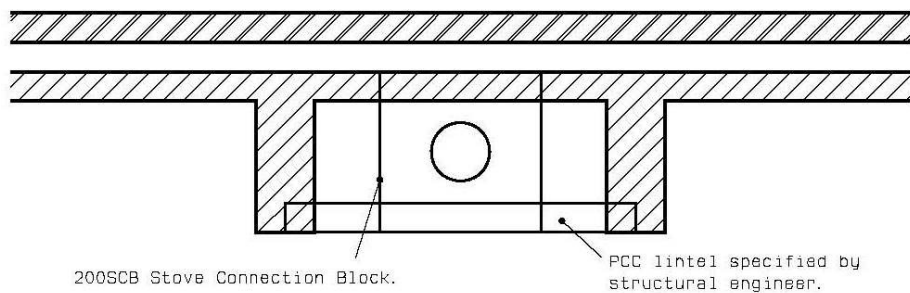
	page
Flue in internal chimney breast	2
Flue in external chimney breast	3
Flue in external chimney breast with a backset	4

Typical Installation Diagram - Stove Connection Block ref 200SCB

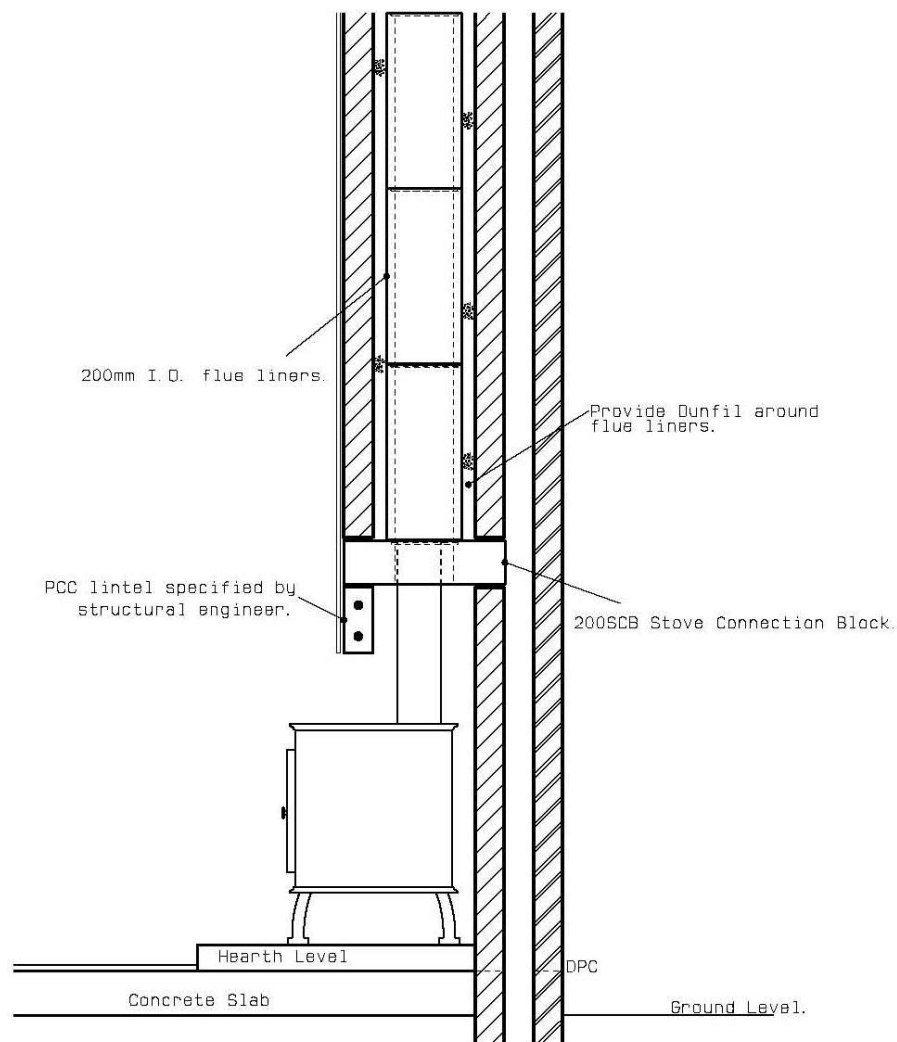
Flue in internal chimney breast



PLAN AT FIRST FLOOR LEVEL.

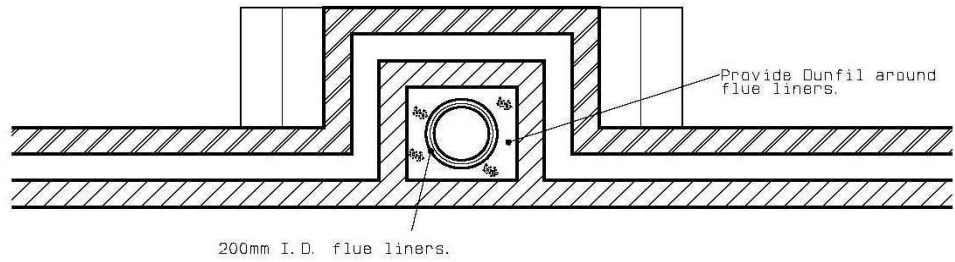


PLAN AT FIREPLACE RECESS LEVEL.

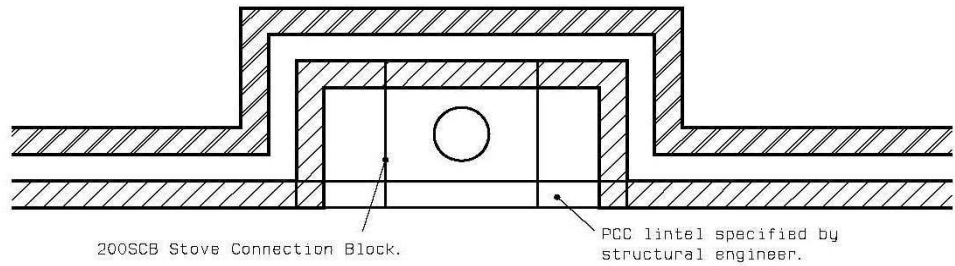


Typical Installation Diagram - Stove Connection Block ref 200SCB

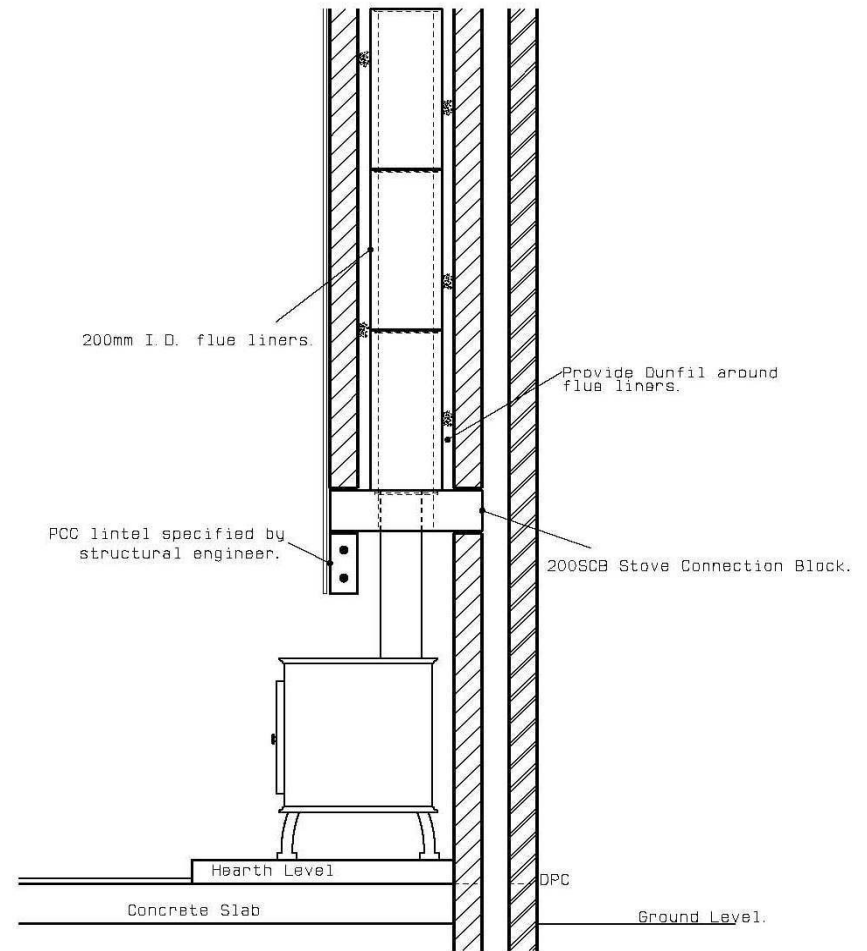
Flue in external chimney breast



PLAN ABOVE SHOULDERS.

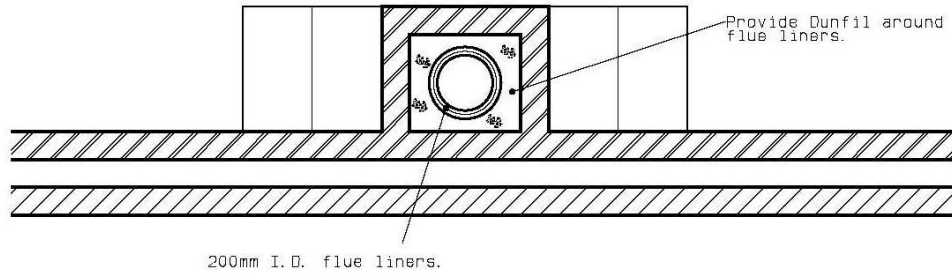


PLAN AT FIREPLACE RECESS LEVEL.

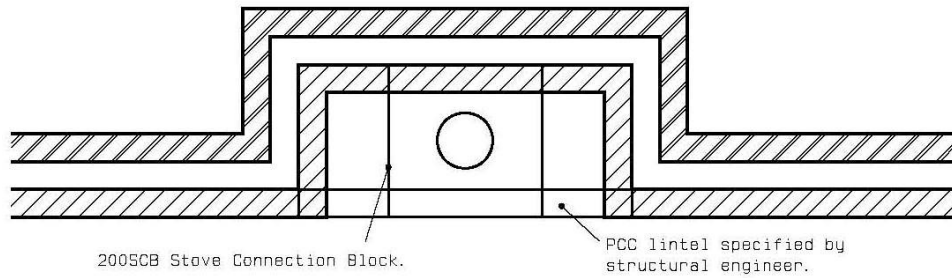


Typical Installation Diagram - Stove Connection Block ref 200SCB

Flue in external chimney breast with a backset



PLAN ABOVE SHOULDER.



PLAN AT FIREPLACE RECESS LEVEL.

